

NEW YORK YOUTH SYMPHONY

Orchestra Auditions 2022-2023

Dear Orchestra Applicant,

Thank you for applying to the 2022-2023 New York Youth Symphony! We are looking forward to hearing you play.

In this packet, you'll find your audition excerpts. Note, excerpts for principal positions, such as Concertmaster or Principal Cello, are optional. At your audition, please let us know if you would like to be considered for principal of your section.

Your audition will last approximately 6-7 minutes and will consist of the following parts:

1. One Excerpt of YOUR choice: You choose which excerpt you'd like to begin with, and you play that excerpt.
2. Either one or two excerpts of OUR choice: We will then choose either one, or if time permits two, excerpts from the following selections for you to play.
3. Solo Repertoire: Please prepare at least two minute of solo repertoire that shows a variety of styles. This could be one excerpt that showcases several different styles of playing at once, or several smaller excerpts (from one or more pieces) that showcase different styles.
4. If you are applying for a principal position that has dedicated excerpts (such as Concertmaster), you'll play each of those excerpts as well.

In your preparation, please place special emphasis on stylistic techniques, and especially to the dynamic and technical markings in the scores. I have left approximate tempos for you where the composers did not. Where available, I recommend that you listen to many recordings, and be in touch if you have questions.

Thank you and good luck!

Michael Repper, Music Director & Tanya Chanphanitpornkit, Assistant Conductor

CLARINET EXCERPTS

- MAHLER: *Symphony no. 1*, Mvt. 1, 5 before Reh. 26 → End
- COLERIDGE-TAYLOR: *Clarinet Quintet*, Mvt. 2, opening → 5th bar of N
 - a. Note the tempo – slow! Take care to play the rhythm precisely, with particular care to articulation and dynamics. As many details as possible.
- MAHLER: *Symphony no. 1*, Mvt. 4, Reh. 6 → 5th bar of Reh. 9

BASS CLARINET AUDITION EXCERPTS (optional)

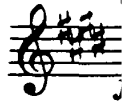
- MAHLER: *Symphony no. 1*, Mvt. 3, Reh 13 → End
- MAHLER: *Symphony no. 1*, Mvt. 1, Opening → 3 before Reh. 1

E-FLAT CLARINET AUDITION EXCERPTS (optional)

- MAHLER: *Symphony no. 1* – Mvt. 3, Reh. 6 → Reh. 8
- MAHLER: *Symphony no. 1* – Mvt. 1, Reh. 30 → End

Mahler — Symphony No. 1 in D Major

1. Clarinette.



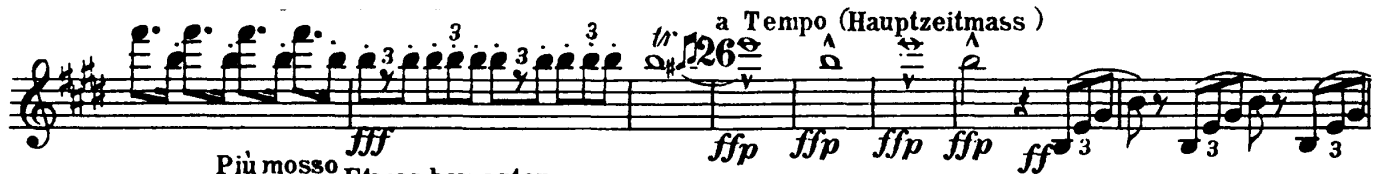
In B-Flat
Tempo, half note = 86+

Vorwärts drängend



ohne Nachschl.

a Tempo (Hauptzeitmass)



Più mosso Etwas bewegter



Allmählich etwas lebhafter



Mahler — Symphony No. 1 in D Major

4

1. Clarinette

The musical score for the first clarinet part consists of five staves of music in D major. The notation includes various dynamics such as *fp*, *ff*, *ffp*, *f*, and *fff*, along with performance instructions like *sempre stacc.*, *staccato accel.*, and *Schnell bis zum Schluss.*. Fingerings and articulation marks are indicated throughout the piece. The score concludes with the initials *G.P.G.P.*

II. Satz.

$\text{♩} = 54.$
Larghetto affettuoso.

II.

Molto espressivo.

Viol. I.

Viol. I.

1

mp

f

2

3

M

p

f

ten.

rit.

p

f

a tempo

p

cresc. poco a poco

N

pp

p

tranquillo

1

pp

f

dim.

cresc.

f

f

p

cresc.

rit.

p

Mahler — Symphony No. 1 in D Major

8

1. Clarinette

IV. Satz

In C
Half = 108

6 **Energisch**

f

ff

ff

ff

ff

f

fp *fp* *f* *ff* *fp*

8 1

Mahler — Symphony No. 1 in D Major

1. Clarinette

9 Zurückhaltend a tempo

The musical score for the first clarinet part, measures 9 through 12, is shown. The key signature is D major (one sharp) and the time signature is 4/4. Measure 9 begins with a quarter rest, followed by quarter notes G4, A4, B4, and C5, each with a slur. Measure 10 continues with quarter notes D5, C5, B4, and A4, each with a slur. Measure 11 has quarter notes G4, F4, E4, and D4, each with a slur. Measure 12 has quarter notes C4, B3, A3, and G3, each with a slur. The tempo marking 'Zurückhaltend' is above measures 9-11, and 'a tempo' is above measure 12.

Quarter = 66 Mahler — Symphony No. 1 in D Major

4

3. Clarinette (Bassclarinette)

13 Wieder etwas bewegter Bassclar in B

1 (1. v. Clar.) pp

14 ppp

15 6 16 1 Plötzlich viel schneller (1. 2. Clar.)

17 Poco rit. Tempo I. ppp

18 Tempo I. rit. morendo

19 2 1 2 attacca. pp p pp ppp dim. nimmt Clarinette in C.

Mahler — Symphony No. 1 in D Major

3. Clarinette

III. Satz

E-Flat Clarinet Excerpt 1 (Optional)

Quarter = 84

Mit Parodie
Nicht schleppen
Clar. in Es

mf gut hervortretend (1. 2. Clar.)

a tempo

pp

p

rit.

pp

3

8

9

10

11

12

13

Sehr einfach und schlicht
wie eine Volksweise

Poco riten. a tempo

Poco riten.

2

8 nimmt Bassclar. in B

6

9

2

Mahler — Symphony No. 1 in D Major

2

4. Clarinette in Es

E-Flat Clarinet Excerpt 2 (Optional)
Half = 110

30




fp *ff* *f* *ff*



ff *ff*



ff *fff* *accel.*



Schnell (bis zum Schluß)
f *sempre stacc.* *G.P.*