



2023/24 Alto Sax Excerpts

Excerpt #1: letter A through the 5th bar of letter D

- Half note = 110bpm, swing

Excerpt #2: letter E through the end of letter G

- Quarter note = 160bpm, swing

Please use the provided chord changes (transposed for your instrument) to demonstrate your improvisational ability. This portion of the audition is **OPTIONAL** for woodwinds/brass, but required for all rhythm section players.

All students will be asked to sightread a short excerpt, and will be asked to play major, melodic minor, and diminished (WH) scales in any key. Drummers will be asked to demonstrate grooves in different styles/tempo in place of scales

Additional Woodwind Doubling Excerpts

There are 4 excerpts at the end for additional woodwind doubling. These excerpts are **OPTIONAL**

Flute Excerpt: measures 21-36

- Quarter note = 88bpm, straight

Clarinet Excerpt: measures 1-21

- Half note = 122bpm, swing

Bass clarinet Excerpt: measures 165-177

- Dotted quarter note = 88bpm, straight

Soprano Sax Excerpt: measures 285-316

- Half note = 104bpm, swing

d=110 swing

NOTICE: The law provides penalties for any unauthorized copying or reproduction of any copyrighted musical work.

LITTLE PIXIE II

1st ALTO SAX

COMPOSED + ARRANGED BY THAD JONES

SWING 2

A

mf

1. 2. 1

B

1

C

D

10 *f*

E

mf

$\text{♩} = 160$ - SWING

Reed 1

- 2 -

Ko-Ko

E



F



G



H



-4-

Improvisation Excerpts (Eb Instruments)

Excerpt #1
♩=108, swing

Excerpt #1 consists of four measures of music in 4/4 time, marked with a tempo of 108 and a swing feel. The notation is presented on three staves, each containing a treble clef and a key signature of one flat (Bb). The notes in all staves are represented by diagonal slashes. The chord progressions for each measure are as follows:

- Measure 1: G⁷
- Measure 2: C⁷
- Measure 3: G⁷
- Measure 4: C⁷, G⁷, E⁷

Excerpt #2
♩=168, swing

Excerpt #2 consists of eight measures of music in 4/4 time, marked with a tempo of 168 and a swing feel. The notation is presented on eight staves, each containing a treble clef and a key signature of one flat (Bb). The notes in all staves are represented by diagonal slashes. The chord progressions for each measure are as follows:

- Measure 1: D Δ
- Measure 2: B⁷
- Measure 3: E⁻⁷
- Measure 4: A⁷
- Measure 5: F \sharp -⁷, B⁷, F⁻⁷, B \flat ⁷, E⁻⁷, A⁷
- Measure 6: D Δ , B⁷, E⁻⁷, A⁷
- Measure 7: F \sharp -⁷, B⁷, A⁻⁷, D⁷
- Measure 8: G Δ , F⁻⁷, B \flat ⁷, E \flat Δ , C \sharp -⁷, F \sharp ⁷

FLUTE

REED 2

ALTO SAX, FLUTE, CLARINET

$\text{♩} = 88$
Straight

JOURNEY HOME

COMPOSED & ARRANGED BY
MARIA SCHNEIDER, ASCAP

*** OPEN THREE PAGES ***

TRIPLET FEEL $\text{♩} = 88$



9 ALTO

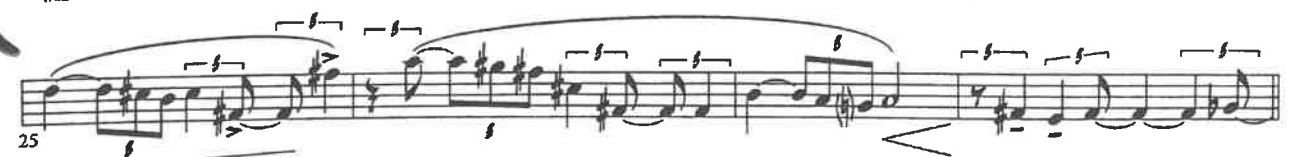


17

(TO FLUTE - QUICK!)



FLUTE



29



CLARINET $d=112$ SWING

As recorded by THE CLAYTON-HAMILTON JAZZ ORCHESTRA

RAINCHECK

ALTO SAX 1/CLARINET

By BILLY STRAYHORN
Arranged by JOHN CLAYTON

(FAST SWING) ($\text{♩} = \text{♩}^3$) *2 Chorus Top* *Piano Trumpets*

(CLARINET) (SOLO)

Measures: 1, 2, 3, 4, 5, 6, 7, 8, 9, 10, 11, 12, 13, 14, 15, 16, 17, 18, 19, 20, 21-26, 24, 25-28, 29-36, 37, 38, 39, 40, 41, 42, 43, 44, 45, 46, 47-48, 49, 50, 51, 52, 53, 54, 55, 56-58

(A)

(B) *drums Time* **(C)**

(D)

(E)

drums fill

mf, *ff*, *p*, *mf*

2, *3*



165

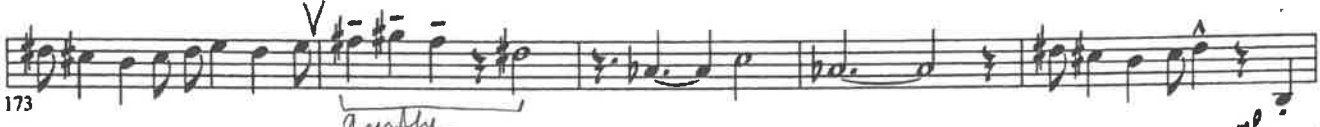


sfz > p



mf

*3
2
V*



gently

mf

178

OPEN

ON CUE



SLOW DEPRESS. -----

Bass Clarinet $\text{♩} = 88$
Straight

SOPRANO SAX

d=104 SWING

285

END TENOR SOLO



293

UNIS.



301



309

-3



317

LEAD

