

FLUTE

REED 2

ALTO SAX, FLUTE, CLARINET

$\text{♩} = 88$
Straight

JOURNEY HOME

COMPOSED & ARRANGED BY
MARIA SCHNEIDER, ASCAP

*** OPEN THREE PAGES ***

TRIPLET FEEL $\text{♩} = 88$



9 ALTO

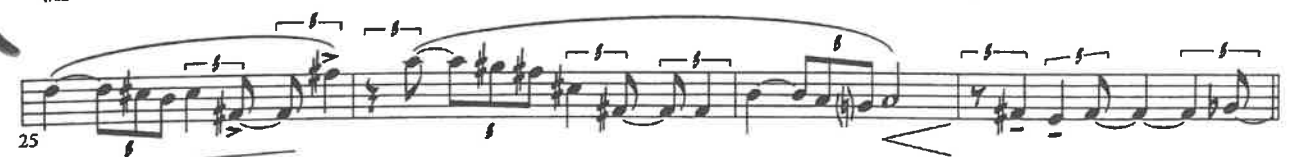


17

(TO FLUTE - QUICK!)



FLUTE



29



CLARINET $d=112$ SWING

As recorded by THE CLAYTON-HAMILTON JAZZ ORCHESTRA

RAINCHECK

ALTO SAX 1/CLARINET

By BILLY STRAYHORN
Arranged by JOHN CLAYTON

(FAST SWING) ($\text{♩} = \text{♩}^3$) 2 Chorus Top *Piano Trumpets*

CLARINET SOLO

1 2 3 4 5 6 7 8 9 10 11 12 13 14 15 16 17 18 19 20 21 22-26 24 *mf* 25-28 *drums fill*

(A)

(B) *drums Time* **(C)**

29-36 37 38 39 40 41 42 43 44 45 46 47-48

(D)

49 50 51 52 53 54 55 56 57 *mf*

(E)

58 59 60 61 62 63 64 65 66 67 68 69 70 71 72 73 74 75 76 77 78 79 80 81 82 83 84 85 86 87 88 89 90 91 92 93 94 95 96 97 98 99 100

Handwritten musical score for Bass Clarinet, measures 162-178. The score is written on a grand staff with a treble clef. Measure numbers 162, 165, 169, 173, and 178 are indicated at the start of their respective staves. A large bracket on the left side groups measures 162 through 173. A large bracket on the right side groups measures 173 through 178. Measure 165 is circled and labeled '165'. Measure 173 is circled and labeled '178'. Performance markings include 'mf' (mezzo-forte) at measures 169 and 173, 'sfz > p' (sforzando to piano) at measure 165, and 'gentle' written below measure 173. A '3 2 V' marking is present above measure 173. Measure 178 is marked 'SLOW DECRESC.' with a dashed line. A box labeled 'OPEN' is placed above measure 178, and a box labeled 'ON CUE' is placed above measure 179.

Bass Clarinet $\text{♩} = 88$
Straight

SOPRANO SAX

d=104 SWING

285

END TENOR SOLO



293

UNIS.



301



309

-3



317

LEAD

